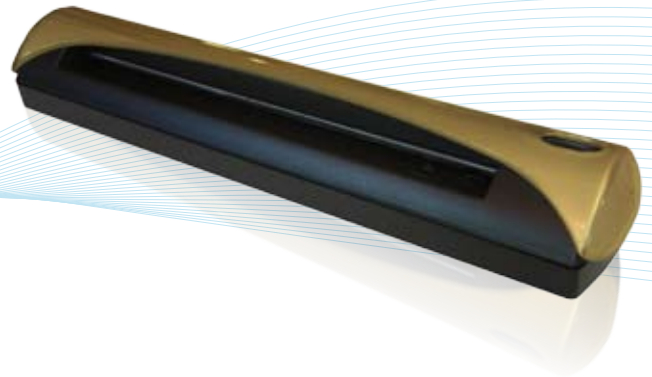


Scanshell® 2000N



Scanshell® 2000NR is a portable, 600 DPI high-resolution A4, Twain compliant color scanner, which offers high quality image capture. Supporting Windows operating systems, the

Scanshell® 2000NR works with any standard USB port and requires no external power supply. With its light weight (14oz/390g) small footprint, simple connection and unique Launch button, the **Scanshell® 2000NR** provides unique scanning convenience for both desktop and mobile use.

Scanner Specification

Interface:	USB 2.0 (Universal Serial Bus)
Image Sensor:	CMOS CIS (Contact Image Sensor)
Resolution:	Hardware optical 600x 1200 DPI
Scanning Modes:	Internal 48-bit analog-to-digital conversion for R, G, B three-color channels.
Scan area Maximum:	8.5" x 14. (legal page)
Scan speed:	3 ppm (pages per minute) B/W; 1 ppm Color
Scanner Weight:	11.8 oz (335 Grams)
Dimensions (LxWxH):	11.5" x 2.0" x 1.7" (292 x 51 x 43mm)
Cable length:	150 cm
Power consumption:	0.01W Suspend; 0.2W Stand by; 2.0W during scan
Paper Thickness:	0.1mm~0.6mm
Paper sensor:	Optical Sensor
Regulatory requirement:	CE, FCC-B, VCCI-B, BSMI
CD-ROM Software:	CD-ROM Software Numerous TWAIN Compatible application
Bundled Software:	ScanShell Product Line Software

Features

- A4, 600 DPI color scanner
- Light-weight and fully portable
- Small footprint
- No external power required
- Twain-compatible

Package Includes

- 600dpi color mobile scanner
- USB cable
- ScanShell product line software
- Leather Bag
- Two calibration papers
- Manual

For more information:
Card Scanning Solutions
6167 Bristol Parkway
Suite 330
Culver City, CA 90230
(213) 867-2625
Mon-Thu 07:00 to 5:00 PST
and Fri 07:00 to 4:00 PST
Fax: (419) 735-2419

www.card-reader.com