



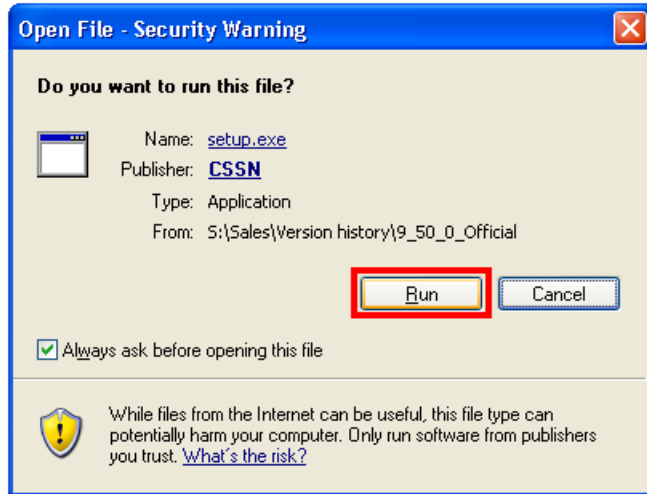
## Quick Install Guide:

**\*DO NOT PLUG THE SCANNER INTO THE COMPUTER UNTIL THE SOFTWARE IS INSTALLED!**

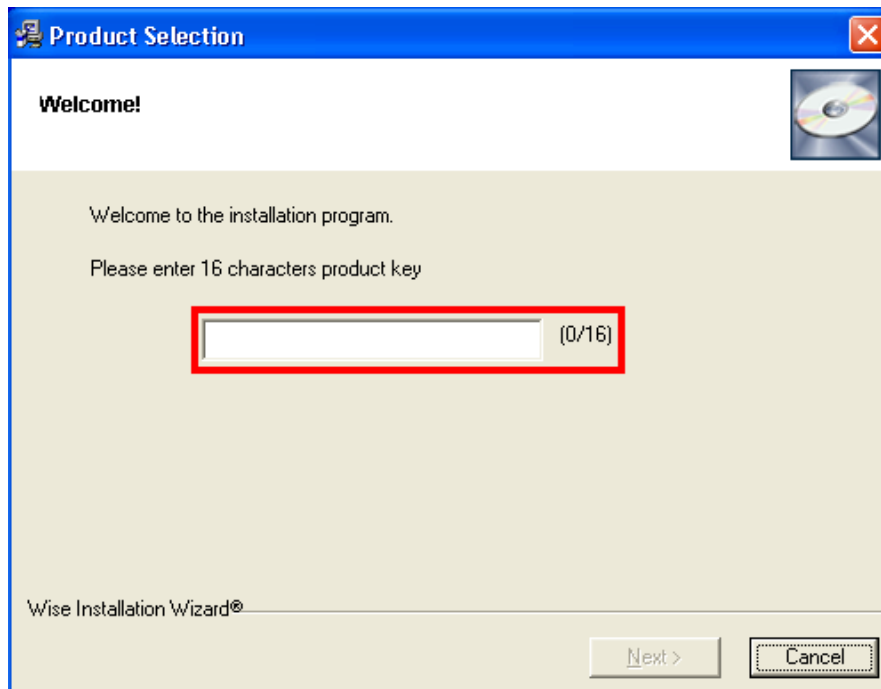
Download the setup file from the MedicScan True Parse web page or from the following link:

<http://www.id-reader.com/ftp/applications/idscan/setup.exe>

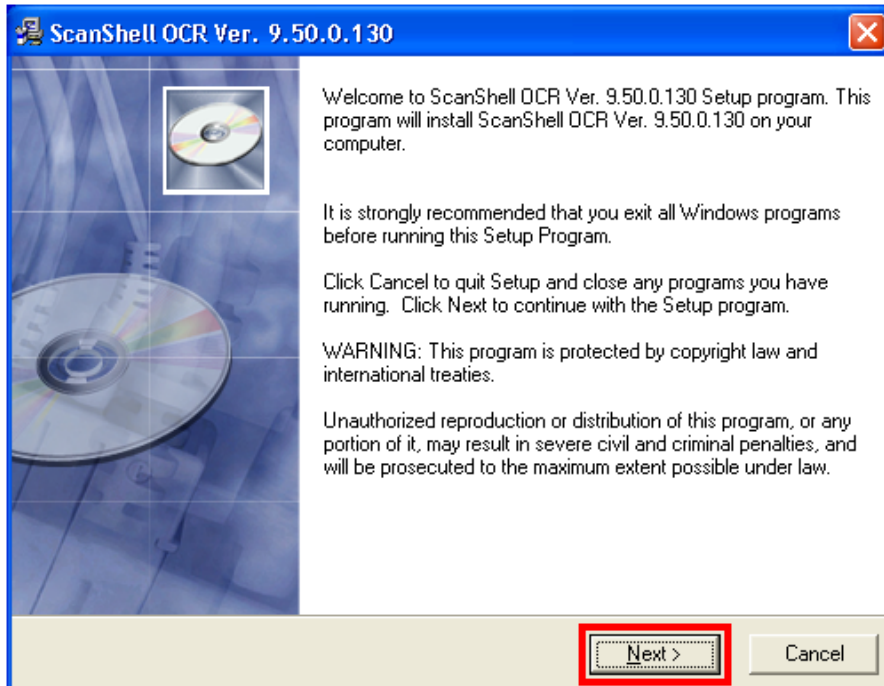




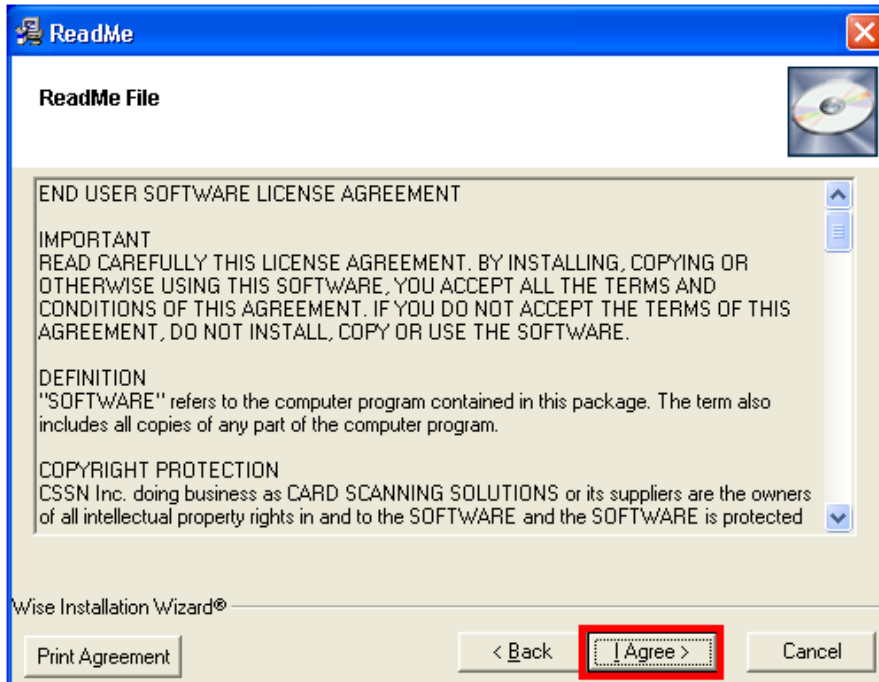
Once the download is complete run the setup file to begin.



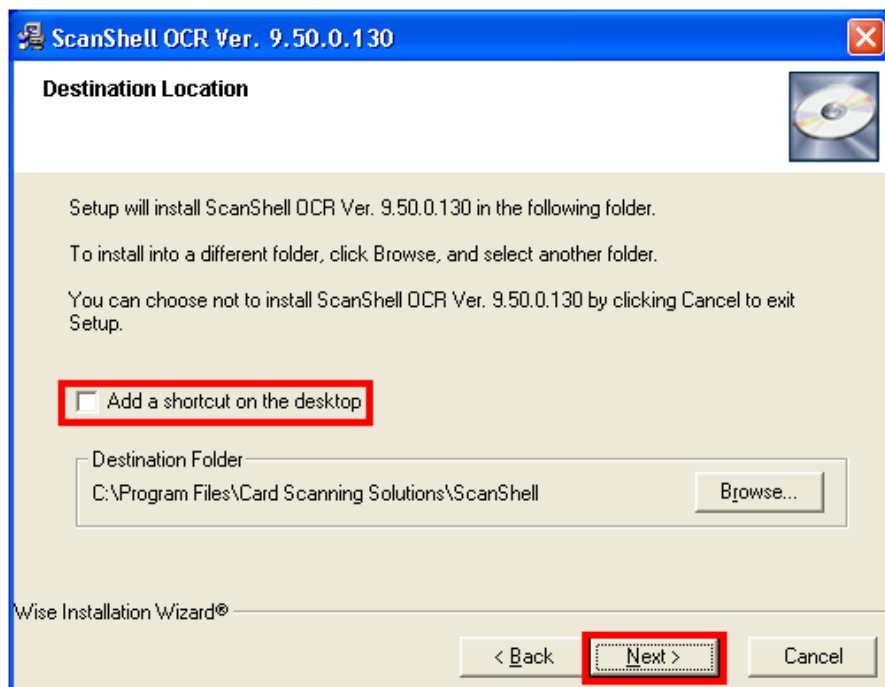
Enter your 16 character license key found on the sleeve of the box. Make sure all the letters are entered as capital letters. (It is the same license key you entered at the [autorun.card-reader.com](http://autorun.card-reader.com) page)



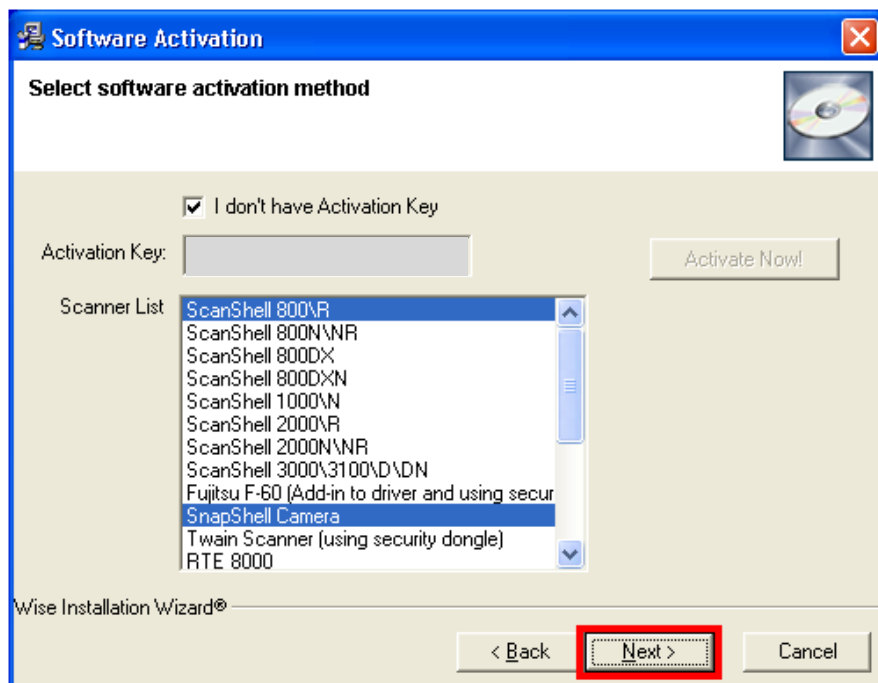
It's recommended to close all Windows applications before starting the installations.



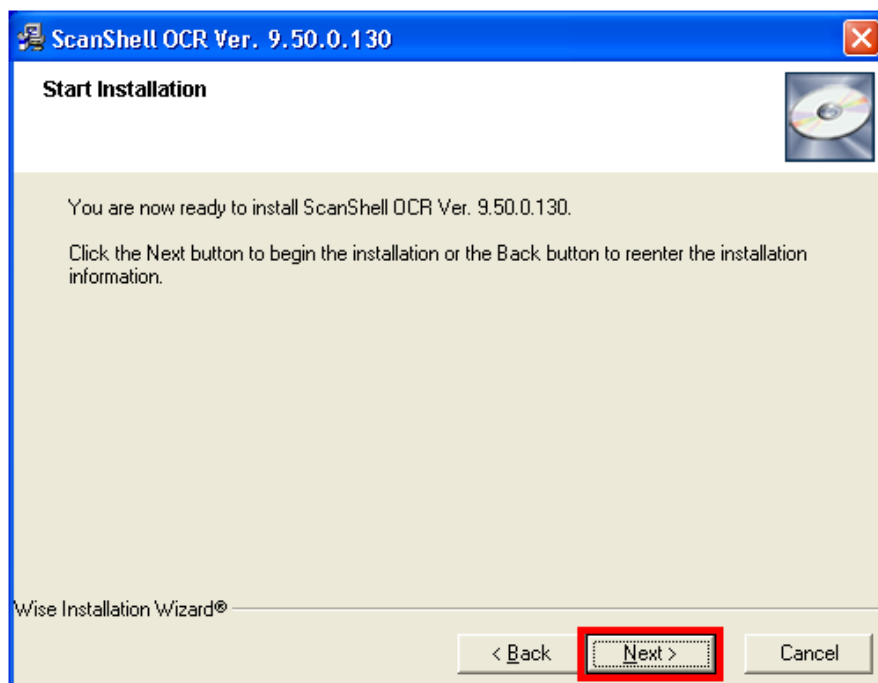
Read through the terms of the software license agreement and click "I Agree" to continue.



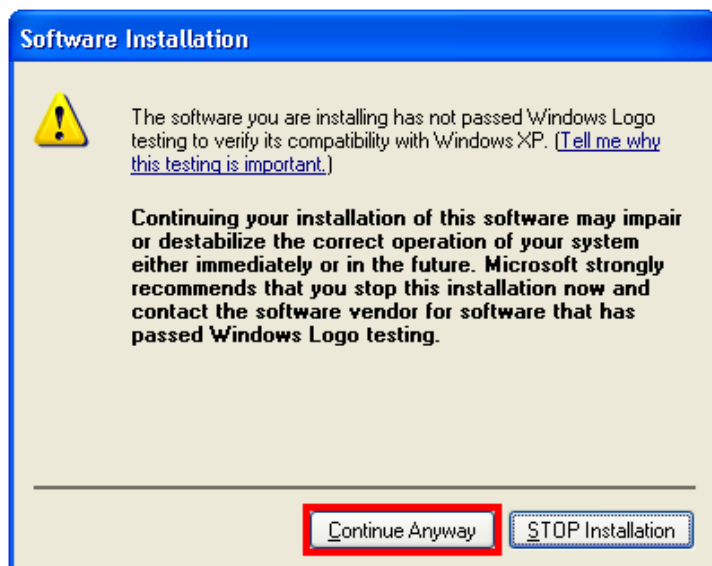
To create a MedicScan True Parse icon on your desktop click the “Add a shortcut on the desktop” checkbox. You can use the default destination folder or browse to select another destination folder by clicking the “Browse...” button. Click “Next” to continue.



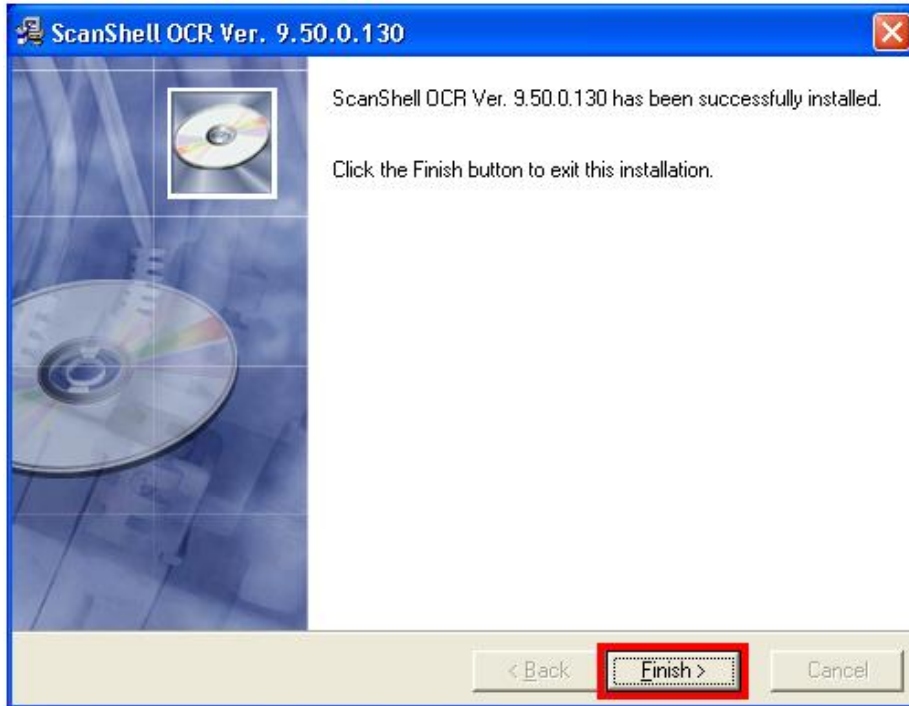
Select your scanner from the list of devices. (If you have a ScanShell 800 or ScanShell 800R you will select the first scanner on the list)



Click the “Next” button to begin the software install.



If prompted select click “Continue Anyway” to install.

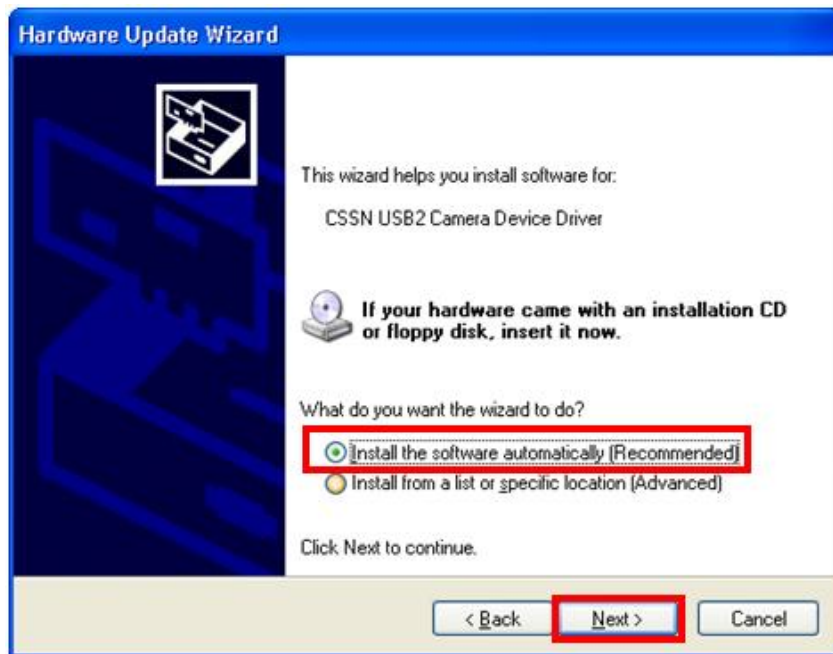


Congratulations MedicScan True Parse is installed. Click “Finish” to finish and close the installation window.

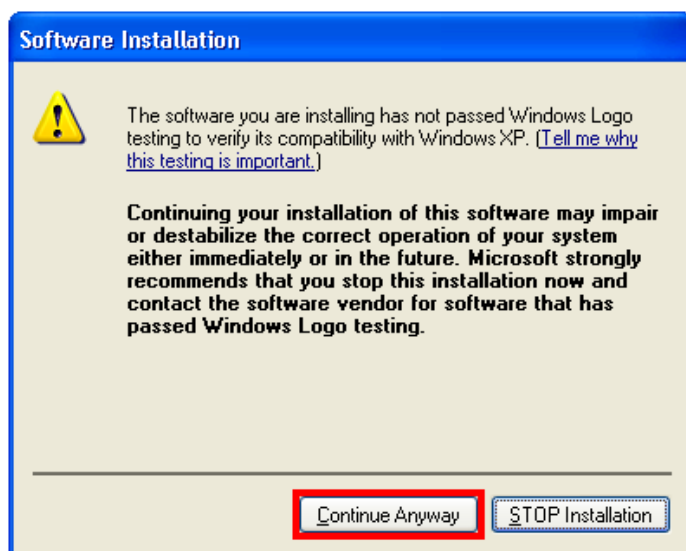
**\*PLUG THE SCANNER USB CABLE INTO THE REAR OF THE COMPUTER**



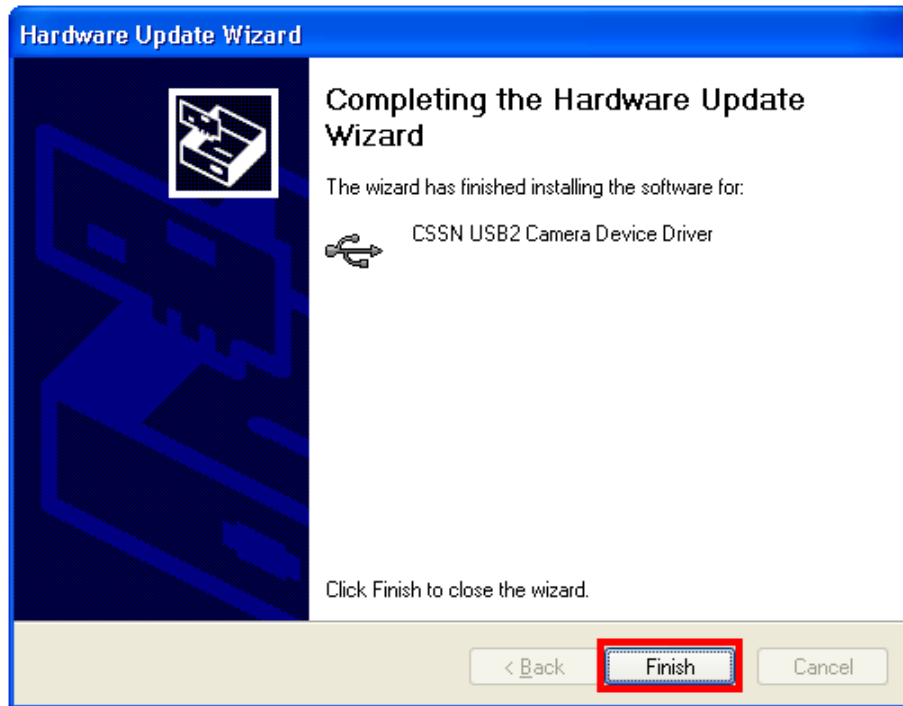
Select “No, not this time” and click “Next”.



Select “Install the software automatically [Recommended]” and click “Next”



If prompted click “Continue Anyway” to install.



The scanner is installed and you are now ready to use MedicScan True Parse. Click “Finish” to close the hardware wizard window.